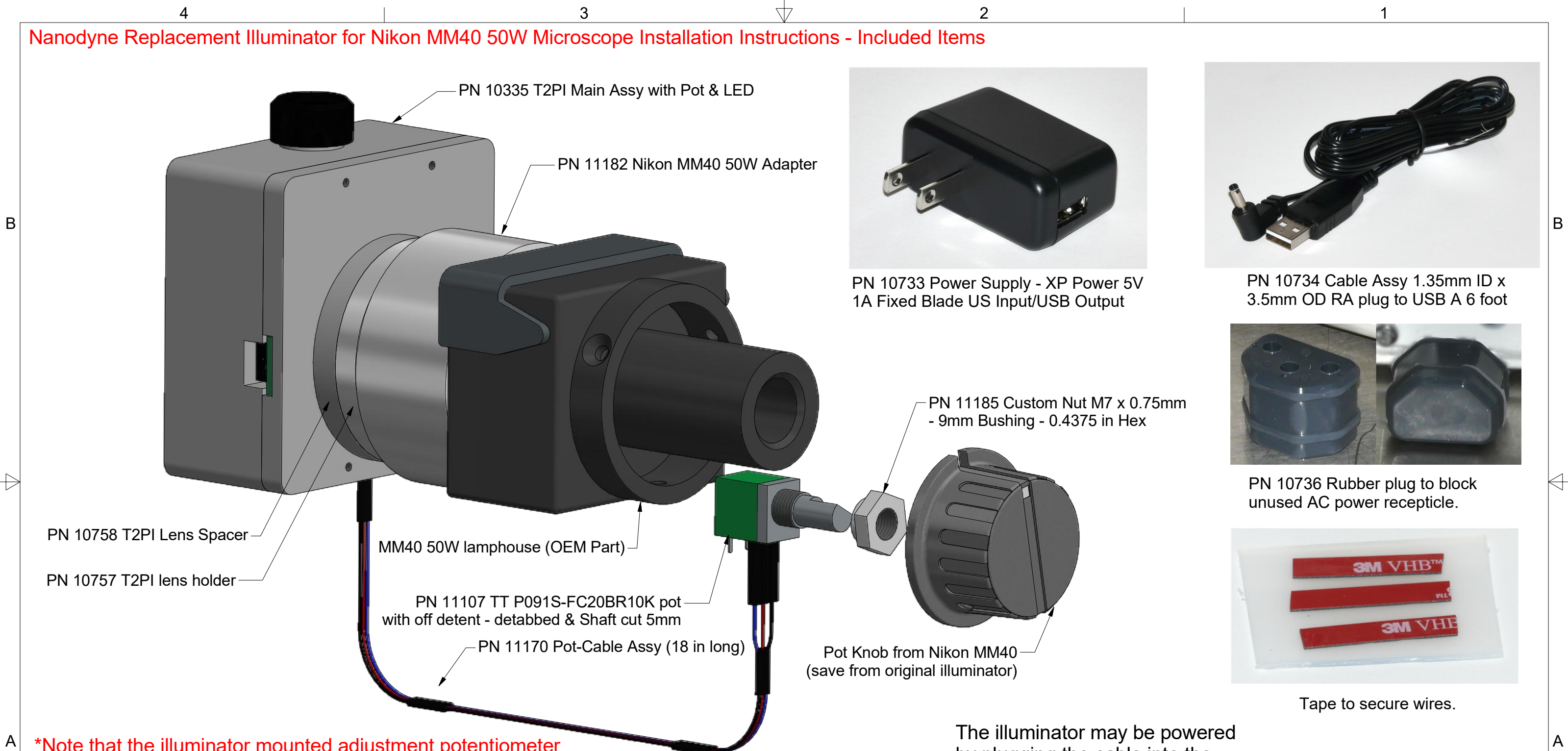


Nanodyne Replacement Illuminator for Nikon MM40 50W Microscope Installation Instructions - Included Items



PN 10335 T2PI Main Assy with Pot & LED

PN 11182 Nikon MM40 50W Adapter

PN 10758 T2PI Lens Spacer

PN 10757 T2PI lens holder

MM40 50W lamphouse (OEM Part)

PN 11107 TT P091S-FC20BR10K pot with off detent - detabbed & Shaft cut 5mm

PN 11170 Pot-Cable Assy (18 in long)



PN 10733 Power Supply - XP Power 5V 1A Fixed Blade US Input/USB Output



PN 10734 Cable Assy 1.35mm ID x 3.5mm OD RA plug to USB A 6 foot



PN 10736 Rubber plug to block unused AC power receptacle.

PN 11185 Custom Nut M7 x 0.75mm - 9mm Bushing - 0.4375 in Hex

Pot Knob from Nikon MM40 (save from original illuminator)



Tape to secure wires.

***Note that the illuminator mounted adjustment potentiometer is standard on this unit. Ask about a remote adjustment pot if desired.**

Additional Items Included But Not Shown:
 PN 10709 Hex Key 3/32 Short Arm (for 4-40 mounting screws)
 PN 10337 Hex Key 2mm Short Arm (for set screw)

Not Included - Save From Original:
 MM40 50W OEM part from original lamphouse

The illuminator may be powered by plugging the cable into the power supply provided, or into a suitable USB port on a computer or other device.

Power supplies subject to substitution without notice due to availability issues and changes in regulations.

Han-Seung Yang	2/19/2019	
PN 11184 Nikon MM40 50W illuminator System Installation Instruction		REV 1
	SHEET 1 OF 4	

Nanodyne Replacement Illuminator for Nikon MM40 50W Microscope Installation Instructions - Step 1. Unscrew old lamp housing and attach Nanodyne adapter.



Unscrew and open the existing MM40 50W original lamphouse cover as shown. Align three screw holes of Nanodyne adapter to OEM lamphouse.



Tighten the adapter using original screws from OEM lamphouse as shown, to be ready to attach to the Nanodyne illuminator.

Han-Seung Yang	2/19/2019
PN 11184 Nikon MM40 50W illuminator System Installation Instruction	REV 1
SHEET 2 OF 4	

Nanodyne Replacement Illuminator for Nikon MM40 50W Microscope Installation Instructions - Step 2. Attach Nanodyne illuminator.



Photo 2a



Photo 2b



Photo 2c

Tighten the set screw to secure OEM lamphouse and Nanodyne illuminator in place, (only in the case of remote adjustment pot) connect the pot cable, and secure the cables using 3M VHB tape if needed. Plug AC adapter to the Nanodyne illuminator and now it is ready to use.

***Note:** The detailed Pot Cable insertion procedure to the T2PI Main Assy will be shown in next page.

Han-Seung Yang	2/19/2019
PN 11184 Nikon MM40 50W illuminator System Installation Instruction	REV 1

Nanodyne Replacement Illuminator for Nikon MM40 50W Microscope Installation Instructions - Step 3. Connect the Pot Cable to the Illuminator.

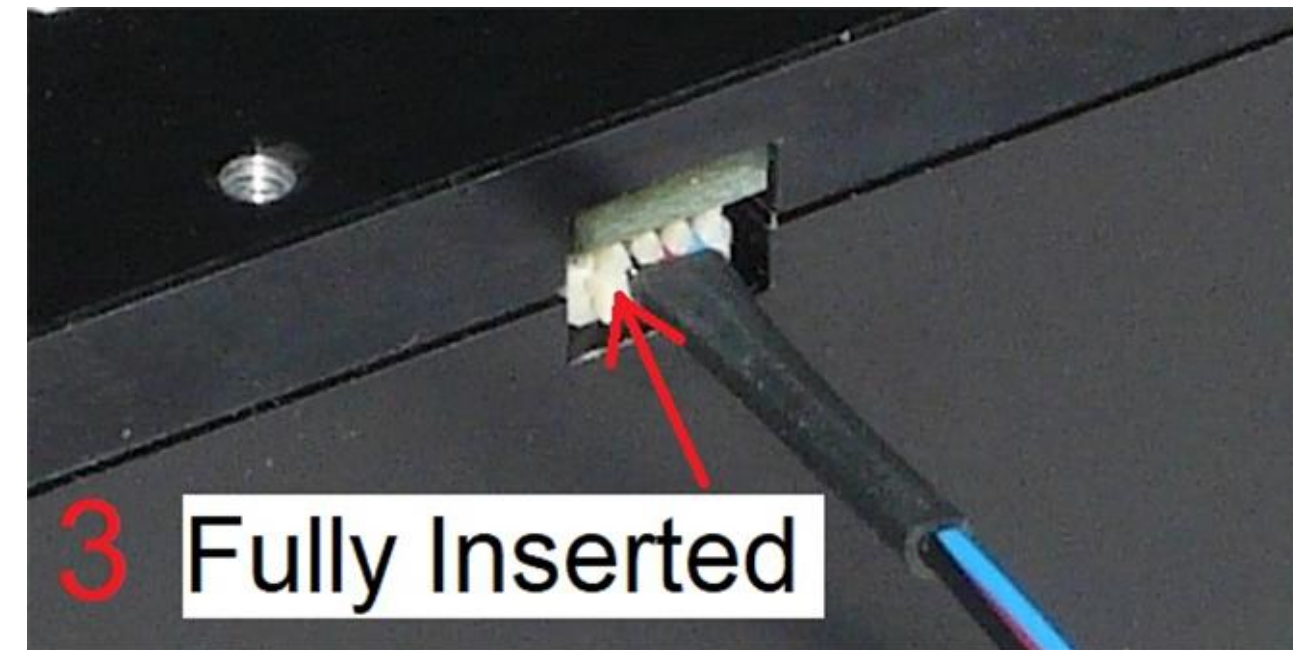
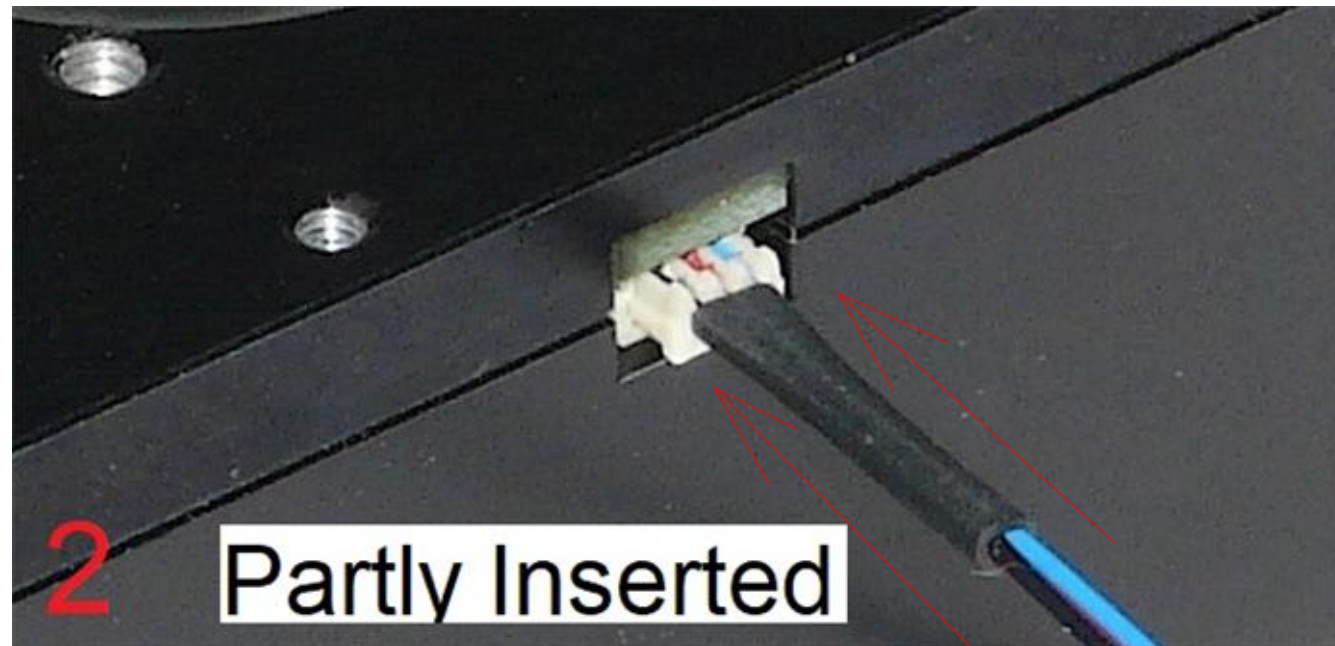
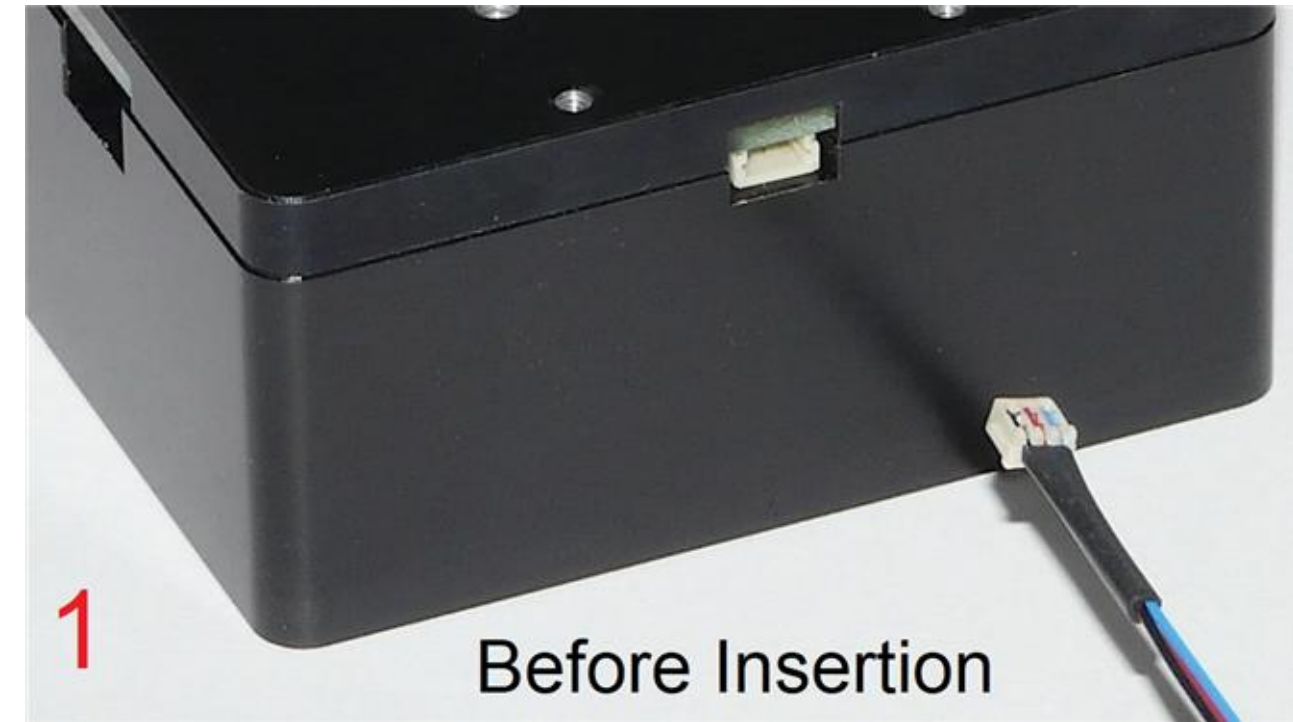
Connect the plug at the end of the Pot Cable Assembly to the mating socket of the illuminator, as shown in the pictures on this page. NOTE THAT THE PLUG IS KEYPED TO ONLY GO INTO THE SOCKET ONE WAY, AS SHOWN.

Partially insert the plug into the mating socket of the illuminator by holding the wire next to the plug with your finger (photo 2).

Use your fingernails, if you have them, or tools like a tiny screwdriver or tweezers pushing on the side of the plug to fully insert it (photo 3).

The socket cannot be fully engaged by pushing on the wires, as the wires would just collapse.

To disconnect it if needed, pull the wire straight out by firmly gripping the black heat shrink tubing.



Han-Seung Yang	2/19/2019
PN 11184 Nikon MM40 50W illuminator System Installation Instruction	REV 1